



Barn 6 - South End

601	602	603	604
TulsaC	Eufaula	Geary	Leedey
TulsaC	Eufaula3		

605	606	607	608	609	610	611	612	613	614	615
Leedey19										
		Wyandotte4				Speery3		Leedey9		

616	617	618	619
Leedey19			
Leedey9			

620	
Leedey	621
Leedey	Leedey
	621
	Leedey
	Leedey

<-----27'-----> <-----19' doors-----> <-----66'-----> <-----19' doors-----> <-----27'6"----->

22 -- 6x6' pens

~24' on this angled wall

Barn 6B (AKA: Beverly Hills)



	301	302	303	304	305	306	307	308	309	310	311	312	313	314	315	316	317	318	319	320	321	322	323	324	325	326	327	328	329	330	331	332	333	334	335	336	337	338	339	340	341	342	343	344	345	346	347																								
arrows>	Yukon42																																	Wago	Merritt18													<barrows																							
gills>	Yukon15																Wagoner18												Merritt18										<gills																																
arrows>	348	349	350	351	352	353	354	355	356	357	358	359	360	361	362	363	364	365	366	367	368	369	370	371	372	373	374	375	376	377	378	379	380	381	382	383	384	385	386	387	388	389	390	391	392	393	394																								
gills>	Yukon42											Tecumseh24																HarperCo2										CarterCo2					NorthRockCreek5					Merritt18					<barrows																		
gills>	Whitesboro18										Tecumseh41																				HarperCo2										NorthRockCreek7							Merritt18							<gills																
	To Ring →																				To Ring →																																																		
	395	396	397	398	399	400	401	402	403	404	405	406	407	408	409	410	411	412	413	414	415	416	417	418	419	420	421	422	423	424	425	426	427	428	429	430	431	432	433	434	435	436	437	438	439	440																									
arrows>	Tuttle16		Whitesboro9										PayneCo7										Howe					Wayne4					Tupelo5					Frontier2					Lexington8					Okeene4					Geronimo3					Boise					<barrows								
gills>	Whitesboro18											PayneCo7										Howe					Wayne5					Tupel					Frontier6					Lexington2					Chels Allen3					Okeene6					Geror					BoiseCity2					<gills				
arrows>	441	442	443	444	445	446	447	448	449	450	451	452	453	454	455	456	457	458	459	460	461	462	463	464	465	466	467	468	469	470	471	472	473	474	475	476	477	478	479	480	481	482	483	484	485	486																									
gills>	Tuttle16											Kingfisher27																Clare										Wagd					Sapulpa2					Jenks8					Eagletown2					Kingfisher12					Noble5					<barrows			
gills>	Tuttle										Tecumseh41																				Clare										Wagd					Sapulpa2					Jenks8					Eagletown2					Kingfisher12					Noble5					<gills
																																												To Show Ring V																											

Pens = 186
(Approximately 6'x6')

Total Half Stalls = 436

Barn 6



X = Potential Scale Location

WASH RACK	WASH RACK
-----------	-----------

6206A	6206B	6207A	6207B	6208A	6208B	6209A	6209B	6210A	6210B	6211A	6211B	6212A	6212B	6213A	6213B	6214A	6214B	6215A	6215B	6216A	6216B	6217A	6217B
barrows> Altus13-----Wilburton5-----AmberPocasset20-----												barrows<											
gilts> Altus8-----Drumright2-----Wilburton8-----AmberPocasset8-----												gilts<											

6205B	6205A	6204B	6204A	6203B	6203A	6202B	6202A	6201B	6201A	6200B	6200A	6199B	6199A	6198B	6198A	6197B	6197A	6196B	6196A	6195B	6195A				
barrows> Altus13-----Dover1-----Ryan4-----JonesAcademy3-----AmberPocasset20-----												barrows<													
gilts> Altus8-----Dover3-----Ryan4-----JonesAcademy8-----Idabel1-----Vinita1-----Boswe												gilts<													
barrows> Clayton6-----Mustang8-----Hartshorne21-----												barrows<													
gilts> Clayton11-----Mustang5-----Hartshorne26-----												gilts<													

6180A	6180B	6181A	6181B	6182A	6182B	6183A	6183B	6184A	6184B
barrows> Shattuck3-----Cache7-----				barrows<					
gilts> Dibble14-----Wetum-----Cache5-----				gilts<					

6179B	6179A	6178B	6178A	6177B	6177A	6176B	6176A	6175B	6175A	6174B	6174A		
barrows> Dibble8-----OklahomaUnion3-----Drumr												barrows<	
gilts> Dibble14-----Clayton11-----												gilts<	
barrows> 6144A 6144B 6145A 6145B 6146A 6146B 6147A 6147B 6148A 6148B 6149A 6149B												barrows<	
gilts> Collinsville2-----Soper1-----Blair1-----Wynnewood16-----												gilts<	
barrows> Collinsville3-----Blair4-----Wynnewood12-----Spring												barrows<	
gilts> Spring-----McLoud12-----Minco7-----Owasso15-----Alex2-----												gilts<	

6143B	6143A	6142B	6142A	6141B	6141A	6140B	6140A	6139B	6139A	6138B	6138A		
barrows> Pawnee2-----Coyle2-----Wynnewood16-----												barrows<	
gilts> Pawnee8-----Coyle-----Wynnewood12-----												gilts<	
barrows> 6108A 6108B 6109A 6109B 6110A 6110B 6111A 6111B 6112A 6112B 6113A 6113B												barrows<	
gilts> Balko18-----Hennessey10-----												gilts<	
barrows> Pawnee8-----Looker-----Hennessey10-----												barrows<	
gilts> Looker-----Hennessey10-----												gilts<	

W W W W

6107B	6107A	6106B	6106A	6105B	6105A	6104B	6104A	6103B	6103A	6102B	6102A		
barrows> Balko18-----Hennessey10-----												barrows<	
gilts> LookebaSickles8-----Balko3-----Hennessey10-----												gilts<	
barrows> 6072A 6072B 6073A 6073B 6074A 6074B 6075A 6075B 6076A 6076B 6077A 6077B												barrows<	
gilts> LookebaSickle-----Balko18-----Jay2-----McIntoshCo2-----Adair6-----												gilts<	
barrows> LookebaSickle-----Jay6-----McIntoshCo2-----Adair6-----												barrows<	
gilts> LookebaSickle-----Jay6-----McIntoshCo2-----Adair6-----												gilts<	

6071B	6071A	6070B	6070A	6069B	6069A	6068B	6068A	6067B	6067A	6066B	6066A		
barrows> Guthrie15-----Reydon2-----Adair6-----												barrows<	
gilts> Guthrie5-----Reydon-----Adair8-----												gilts<	
barrows> 6036A 6036B 6037A 6037B 6038A 6038B 6039A 6039B 6040A 6040B 6041A 6041B												barrows<	
gilts> Cushing5-----Guthrie15-----Glencoe15-----												gilts<	
barrows> Cushing4-----Skiatook14-----Glencoe15-----												barrows<	
gilts> Cushing4-----Skiatook14-----Glencoe15-----												gilts<	

6035B	6035A	6034B	6034A	6033B	6033A	6032B	6032A	6031B	6031A	6030B	6030A		
barrows> Skiatook-----Guthrie15-----Glencoe15-----												barrows<	
gilts> Skiatook14-----Glencoe13-----												gilts<	
barrows> 6000A 6000B 6001A 6001B 6002A 6002B 6003A 6003B 6004A 6004B 6005A 6005B												barrows<	
gilts> Cleveland5-----Glencoe15-----												gilts<	
barrows> Cleveland4-----Glencoe13-----												barrows<	
gilts> Cleveland4-----Glencoe13-----												gilts<	

E E E E

6101B	6101A	6100B	6100A	6099B	6099A	6098B	6098A	6097B	6097A	6096B	6096A	6095B	6095A	6094B	6094A	6093B	6093A	6092B	6092A	6091B	6091A	6090B	6090A
barrows> PawneeStringtown2-----ElmoreCityPernell5-----Webbe-----Sentinel12-----Fletcher16-----												barrows<											
gilts> PawneeStringtown3-----ElmoreCityPernell4-----Webbe-----Sentinel18-----Fletcher11-----												gilts<											
barrows> 6078A 6078B 6079A 6079B 6080A 6080B 6081A 6081B 6082A 6082B 6083A 6083B 6084A 6084B 6085A 6085B 6086A 6086B 6087A 6087B 6088A 6088B 6089A 6089B												barrows<											
gilts> PawneeCo5-----UnionCity4-----Savanna-----Kiowa-----Maysville6-----Sayre7-----Welch-----												gilts<											
barrows> PawneeCo5-----UnionCity2-----Savanna3-----Kiowa6-----Maysville-----Sayre4-----Welch4-----												barrows<											
gilts> PawneeCo5-----UnionCity2-----Savanna3-----Kiowa6-----Maysville-----Sayre4-----Welch4-----												gilts<											

6065B	6065A	6064B	6064A	6063B	6063A	6062B	6062A	6061B	6061A	6060B	6060A	6059B	6059A	6058B	6058A	6057B	6057A	6056B	6056A	6055B	6055A	6054B	6054A
barrows> Marietta4-----Oilton6-----Madill14-----												barrows<											
gilts> Marietta2-----Turner15-----Olive1-----Oilton5-----Madill14-----												gilts<											
barrows> 6042A 6042B 6043A 6043B 6044A 6044B 6045A 6045B 6046A 6046B 6047A 6047B 6048A 6048B 6049A 6049B 6050A 6050B 6051A 6051B 6052A 6052B 6053A 6053B												barrows<											
gilts> Turner13-----Turner15-----Texas-----Depew-----Crowder2-----Kansas3-----LoneGrove4-----												gilts<											
barrows> Turner15-----Texas-----Depew-----Crowder2-----Kansas4-----LoneGrove3-----												barrows<											
gilts> Turner15-----Texas-----Depew-----Crowder2-----Kansas4-----LoneGrove3-----												gilts<											

6029B	6029A	6028B	6028A	6027B	6027A	6026B	6026A	6025B	6025A	6024B	6024A	6023B	6023A	6022B	6022A	6021B	6021A	6020B	6020A	6019B	6019A	6018B	6018A
barrows> Choctaw5-----Stratford14-----Haileyville3-----Colbert5-----												barrows<											
gilts> Choctaw9-----Stratford8-----Haileyville2-----Colbert7-----												gilts<											
barrows> 6006A 6006B 6007A 6007B 6008A 6008B 6009A 6009B 6010A 6010B 6011A 6011B 6012A 6012B 6013A 6013B 6014A 6014B 6015A 6015B 6016A 6016B 6017A 6017B												barrows<											
gilts> Choctaw5-----Anadarko9-----Valliant4-----Grandfield4-----Antlers4-----												gilts<											
barrows> Choctaw9-----Davis2-----Anadarko8-----Valliant5-----Grandfield3-----Antlers4-----												barrows<											
gilts> Choctaw9-----Davis2-----Anadarko8-----Valliant5-----Grandfield3-----Antlers4-----												gilts<											

(6x6 pens)
80'x175'

Totals: Pens = 230



Barn 7 South

7230	7229	7228	7227	7226	7225	7224	7223	7222	7221	7220	7219	7218
barrows> Lindsay30												
gilt> Lindsay26												

7217	7216	7215	7214	7213	7212	7211	7210	7209	7208		
barrows> Poteau9									Alfalfo		
gilt> Poteau17									Alfalfo		

7185	7186	7187	7188	7189	7190	7191	7192	7193	7194	7195	7196	7197
barrows> Lindsay30												
gilt> Lindsay26												

7198	7523	7200	7201	7202	7203	7204	7205	7206	7207			
barrows> OklahomaCo4							Ketchum2		Roger		BrayDc Beaver	
gilt> Poteau17									BrayDc Beaver			

7184	7183	7182	7181	7180	7179	7178	7177	7176	7175	7174	7173	7172
barrows> Lindsay30												
gilt> GarfieldCo11												

7171	7170	7169	7168	7167	7166	7165	7164	7163	7162		
barrows> Batties				Haskel				Blanchard10			
gilt> Batties3				Blanchard10				Waynoka2			

7139	7140	7141	7142	7143	7144	7145	7146	7147	7148	7149	7150	7151
barrows> ArnettEllis12												
gilt> GarfieldCo11												

7152	7153	7154	7155	7156	7157	7158	7159	7160	7161		
barrows> Blackwell10						Blanchard10			Tahleq Lawton		
gilt> Blackwell12						Blanchard10			Tahlequah2		

7138	7137	7136	7135	7134	7133	7132	7131	7130	7129	7128	7127	7126
barrows> Cashion15												
gilt> Cashion14												

7125	7124	7123	7122	7121	7120	7119	7118	7117	7116		
barrows> Blackwell10								Lawton6			
gilt> Blackwell12										Lawton	

7093	7094	7095	7096	7097	7098	7099	7100	7101	7102	7103	7104	7105
barrows> Cashion15												
gilt> Cashion14												

7106	7107	7108	7109	7110	7111	7112	7113	7114	7115		
barrows> Chattanooga27							Guymc			Lawton6	
gilt> Chattanooga23							Hulbert7				

7092	7091	7090	7089	7088	7087	7086	7085	7084	7083	7082	7081	7080
barrows> CaneyValley10												
gilt> CaneyValley11												

7079	7078	7077	7076	7075	7074	7073	7072	7071	7070
barrows> Chattanooga27									
gilt> Chattanooga23									

7047	7048	7049	7050	7051	7052	7053	7054	7055	7056	7057	7058	7059
barrows> Yale2												
gilt> Yale1												

7060	7061	7062	7063	7064	7065	7066	7067	7068	7069
barrows> Chattanooga27									
gilt> Chattanooga23									

7046	7045	7044	7043	7042	7041	7040	7039	7038	7037	7036	7035	7034
barrows> Tipton8												
gilt> Tipton5												

7033	7032	7031	7030	7029	7028	7027	7026	7025	7024						
barrows> Pryor1								CimarronLahd		Mannford5		Kingstc		Colem	
gilt> Pryor1								Mannford7				Kingstc		Colem	

7001	7002	7003	7004	7005	7006	7007	7008	7009	7010	7011	7012	7013
barrows> Crescent7												
gilt> Crescent5												

7014	7015	7016	7017	7018	7019	7020	7021	7022	7023
barrows> Duke4				OologahTalala3			Bluejacket3		
gilt> Duke1				Freedd			OologahTalala8		

To Ring

To Ring

To Ring

85'x200'

X = Potential Scale Location

Barn 7 North



Totals: 6x6 Pens = 260

7559	7558	7557	7556	7555	7554	7553	7552	7551	7550	7549	7548	7547	7546
Granite4				Sterling24									
Granite11								Sterling15					

7545	7544	7543	7542	7541	7540	7539	7538	7537	7536	7535	7534
Sterling24				Omega9							
Sterling15				Omega9							

7508	7509	7510	7511	7512	7513	7514	7515	7516	7517	7518	7519	7520	7521																
Calvin2			Latta2		BurnsFla		Sterling24																						
Calvin3			Latta1		BurnsFla		Granite11		Sterling15																				
7507				7506		7505		7504		7503		7502		7501		7500		7499		7498		7497		7496		7495		7494	
Frederick6				Frederick2		SandSpr		Muskoge		BrokenBow5		BrokenBow3		Sallisaw2		Empire10													
Frederick2				SandSpr		Muskoge		BrokenBow5		BrokenBow3		Sallisaw2		Empire10															

7522	7523	7524	7525	7526	7527	7528	7529	7530	7531	7532	7533														
Sterling24				Calera2		Cheyenne8																			
Calera7				Cheyenne8																					
7493				7492		7491		7490		7489		7488		7487		7486		7485		7484		7483		7482	
AlineCleo10				AlineCleo7		Alva16																			
Calera7				SequoyahCo4		AlineCleoAlva6																			

7456	7457	7458	7459	7460	7461	7462	7463	7464	7465	7466	7467	7468	7469																
Billings2			Strother1		Agra2		ThomasF		Butner1		Empire10																		
Billings2			Strother2		Agra1		ThomasF		Butner1		Empire10																		
7455				7454		7453		7452		7451		7450		7449		7448		7447		7446		7445		7444		7443		7442	
Canute3				Stuart5		Tonkawa6																							
Canute2				Stuart9		Tonkawa3																							

7470	7471	7472	7473	7474	7475	7476	7477	7478	7479	7480	7481														
AlineCleo10						Alva16																			
WrightCity11											Alva6														
7441				7440		7439		7438		7437		7436		7435		7434		7433		7432		7431		7430	
VelmaAlma17				Alva16																					
VelmaAlma7				Hobart8		Alva6																			

7404	7405	7406	7407	7408	7409	7410	7411	7412	7413	7414	7415	7416	7417																
FortSupply4				Roff1		KiowaCo		Macomb5		Konawa1		Stephens KayCo1																	
Hinton15				Macomb4		Konawa1		Stephens KayCo1																					
7403				7402		7401		7400		7399		7398		7397		7396		7395		7394		7393		7392		7391		7390	
Beaver8				Checotah6																									
Hinton15				Beaver3		Checotah11																							

7418	7419	7420	7421	7422	7423	7424	7425	7426	7427	7428	7429														
VelmaAlma17				Newkirk5		Hammon2																			
VelmaAlma7				Bowlegs1		Newkirk6		Hammon2																	
7389				7388		7387		7386		7385		7384		7383		7382		7381		7380		7379		7378	
VelmaAlma17				Canton3		Tishomingo9		Coweta6																	
VelmaAlr				Canton4		KremlinH		Coweta12																	

7352	7353	7354	7355	7356	7357	7358	7359	7360	7361	7362	7363	7364	7365																
Hinton3			Newcastle11																										
Hinton15			Newcastle6								Checotah11																		
7351				7350		7349		7348		7347		7346		7345		7344		7343		7342		7341		7340		7339		7338	
Chisholm3				Chickasha11																									
Chisholm4				BooneAp		Timberla		Chickash		Moss14																			

7366	7367	7368	7369	7370	7371	7372	7373	7374	7375	7376	7377														
Vanoss8				Quinton1		Tishomingo9		Coweta6																	
Vanoss6				Quinton1		Tishomin		Silo1		Coweta12															
7337				7336		7335		7334		7333		7332		7331		7330		7329		7328		7327		7326	
Vanoss8				Porter14																					
Vanoss6				Porter19																					

7300	7301	7302	7303	7304	7305	7306	7307	7308	7309	7310	7311	7312	7313
Fairview3			McCurtainCo4				Moss7						
Fairview2			Stroud1		McCurtainCo4		Moss14						

7314	7315	7316	7317	7318	7319	7320	7321	7322	7323	7324	7325
Piedmont5					Porter14						
Piedmont2			Porter19								

To Ring

To Ring



X = Potential Scale Location
 NOTE -- 8096 needs stabilizing of center panel

Barn 8

300 Half Stalls

8137A 8137B 8138A 8138B 8139A 8139B 8140A 8140B 8141A 8141B Atoka6 Meeker Buffalo8 Atoka5 Meeker6 Buffalo RedOak	< barrows > < gilts >	8142A 8142B 8143A 8143B 8144A 8144B 8145A 8145B 8146A 8146B 8147A 8147B 8148A 8148B 8149A 8149B Buffalo8 RedOak14 RedOak25
8136B 8136A 8135B 8135A 8134B 8134A 8133B 8133A 8132B 8132A 8131B 8131A BrokenArrow2 Atoka6 Texhoma7 BrokenArrow2 Atoka5 Texhoma5 RedOak25 8119A 8119B 8120A 8120B 8121A 8121B 8122A 8122B 8123A 8123B 8124A 8124B Marlow18 Marlow11 Westville5 Grove5	< barrows > < gilts >	8130B 8130A 8129B 8129A 8128B 8128A Taloga6 RedOak25 8125A 8125B 8126A 8126B 8127A 8127B CentralHigh9 CentralHigh6
8118B 8118A 8117B 8117A 8116B 8116A 8115B 8115A 8114B 8114A Marlow18 Westvil LittleAx Grove2 Marlow1 Westvil LittleAx Grove5 8105A 8105B 8106A 8106B 8107A 8107B 8108A 8108B 8109A 8109B Vian3 Paoli2 Haworth2 Haskell3 Vian7 Haskell7	< barrows > < gilts >	8113B 8113A 8112B 8112A Luther2 CentralHigh9 Luther4 8110A 8110B 8111A 8111B Sulphur6 Carneg Central Carnegie4
8104B 8104A 8103B 8103A 8102B 8102A 8101B 8101A 8100B 8100A 8099B 8099A Muskogee7 Norman5 Haskell7 Muskogee8 8087A 8087B 8088A 8088B 8089A 8089B 8090A 8090B 8091A 8091B 8092A 8092B Edmond3 Laverne7 BechhamCo5 Edmond6 Laverne4 BechhamCo4	< barrows > < gilts >	8098B 8098A 8097B 8097A 8096B 8096A Sulphur6 Cherokee2 Sulphur4 Cherokee2 8093A 8093B 8094A 8094B 8095A 8095B Elgin17 Elgin13
8086B 8086A 8085B 8085A 8084B 8084A 8083B 8083A 8082B 8082A Midway6 Fargo4 BechhamCo5 Midway12 Fargo2 Temple3 BechhamCo4 8073A 8073B 8074A 8074B 8075A 8075B 8076A 8076B 8077A 8077B Midway6 Navajo8 Midway12 Navajo2	< barrows > < gilts >	8081B 8081A 8080B 8080A Elgin17 Elgin13 8078A 8078B 8079A 8079B Elgin17 Elgin13
8072B 8072A 8071B 8071A 8070B 8070A 8069B 8069A 8068B 8068A 8067B 8067A Canadian5 Duncan6 Navajo2 Canadian3 Duncan8 Navajo2 8055A 8055B 8056A 8056B 8057A 8057B 8058A 8058B 8059A 8059B 8060A 8060B MulhallOrlando16 Washington6 MulhallOrlando8 Washington13	< barrows > < gilts >	8066B 8066A 8065B 8065A 8064B 8064A Purcell3 Elgin17 Purcell6 Navajo2 8061A 8061B 8062A 8062B 8063A 8063B Wellston7 Wellston6
8054B 8054A 8053B 8053A 8052B 8052A 8051B 8051A 8050B 8050A MulhallOrlando16 Washington6 Washington13 8041A 8041B 8042A 8042B 8043A 8043B 8044A 8044B 8045A 8045B Marsha Daven HydroEakly11 Marsha Davenport3 Lincoln Paden3 HydroEakly2	< barrows > < gilts >	8049B 8049A 8048B 8048A Drummond3 Wellsto Drummond3 Pottaw 8046A 8046B 8047A 8047B Colcord2 Coalgate8 Colcord2 Coalgate2
8040B 8040A 8039B 8039A 8038B 8038A 8037B 8037A 8036B 8036A 8035B 8035A Weatherford4 HydroEakly11 Smithville5 Weatherford7 Smithville5 8023A 8023B 8024A 8024B 8025A 8025B 8026A 8026B 8027A 8027B 8028A 8028B Wister2 Harrah11 Wister18 Harrah26	< barrows > < gilts >	8034B 8034A 8033B 8033A 8032B 8032A Coalgate8 Harrah26 8029A 8029B 8030A 8030B 8031A 8031B Moorland12 Harrah26 8 - 8015, 8016, 8017, 8029, 8030, 8031
8022B 8022A 8021B 8021A 8020B 8020A 8019B 8019A 8018B 8018A Calumet12 Harrah Moorele Wister18 Harrah26 8009A 8009B 8010A 8010B 8011A 8011B 8012A 8012B 8013A 8013B Calumet12 ElReno18 Calumet4 ElReno10	< barrows > < gilts >	8017B 8017A 8016B 8016A Moorland12 Moorland5 8014A 8014B 8015A 8015B WhiteCo9 Moorlar Harrah26 Moorlar
8008B 8008A 8007B 8007A 8006B 8006A 8005B 8005A 8004B 8004A 8003B 8003A ElReno18 Wister18 ElReno10	< barrows > < gilts >	8002B 8002A 8001B 8001A 8000B 8000A WhiteCo9 Bethell6

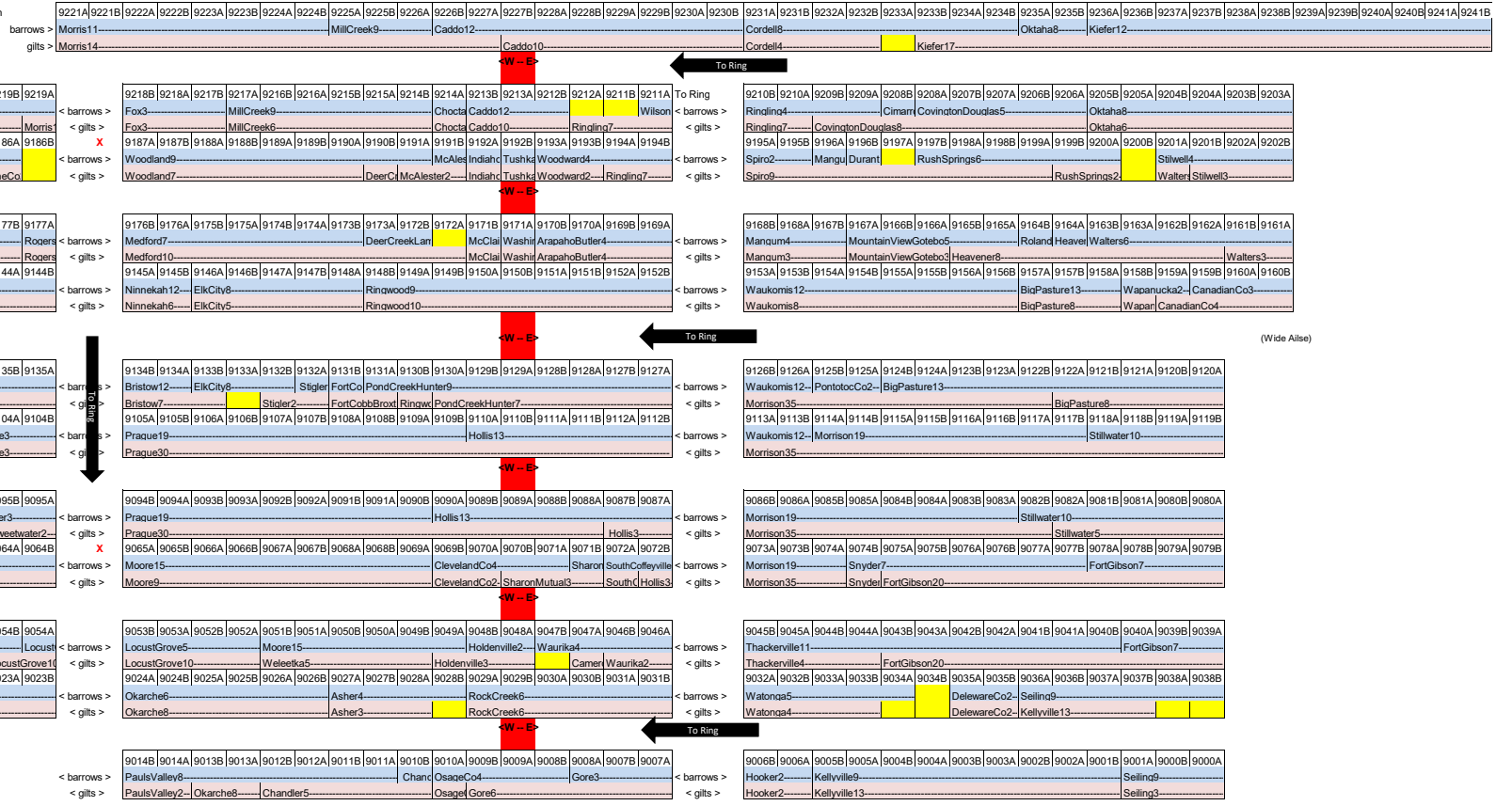
Barn 9



X = Potential Scale Location

484 Half Stalls

NOTE - 9221 needs stabilizing of center panel



(Wide Aisle)

(Wide Aisle)